



Green Care Research in Finland

Trondheim, 27.6.2012

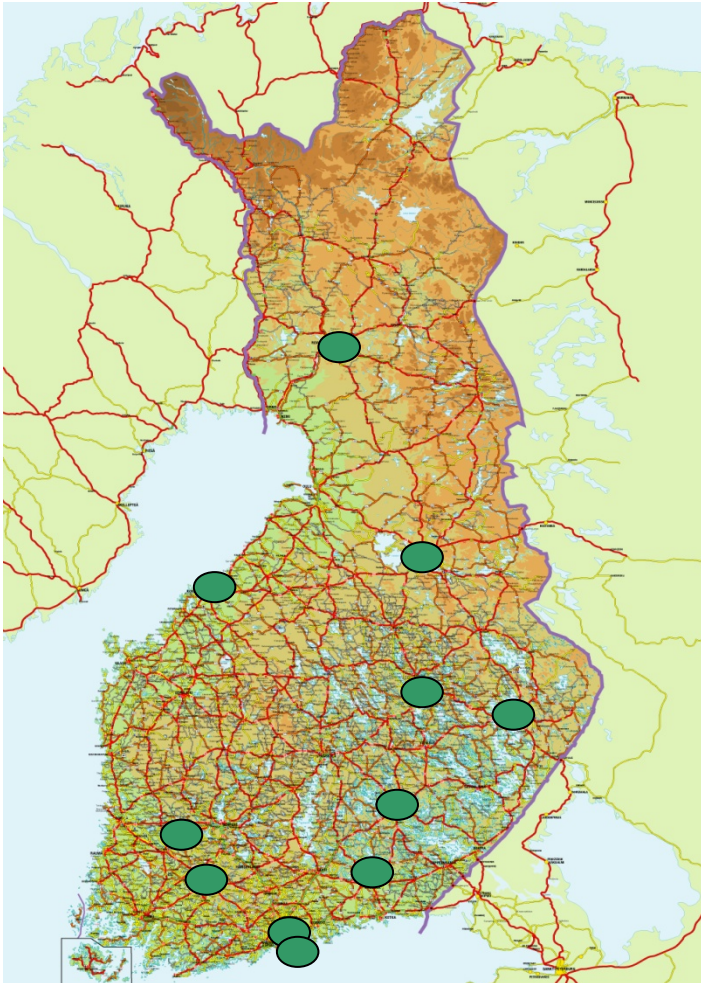
Katriina Soini

PhD, Principal Research Scientist

Agrifood Research Finland, MTT



Development projects



- Tools for GC entrepreneurship (education, networking, business models, quality assurance systems)
- Testing and developing Green Care methods for various target groups

CareVa (2009-2012)

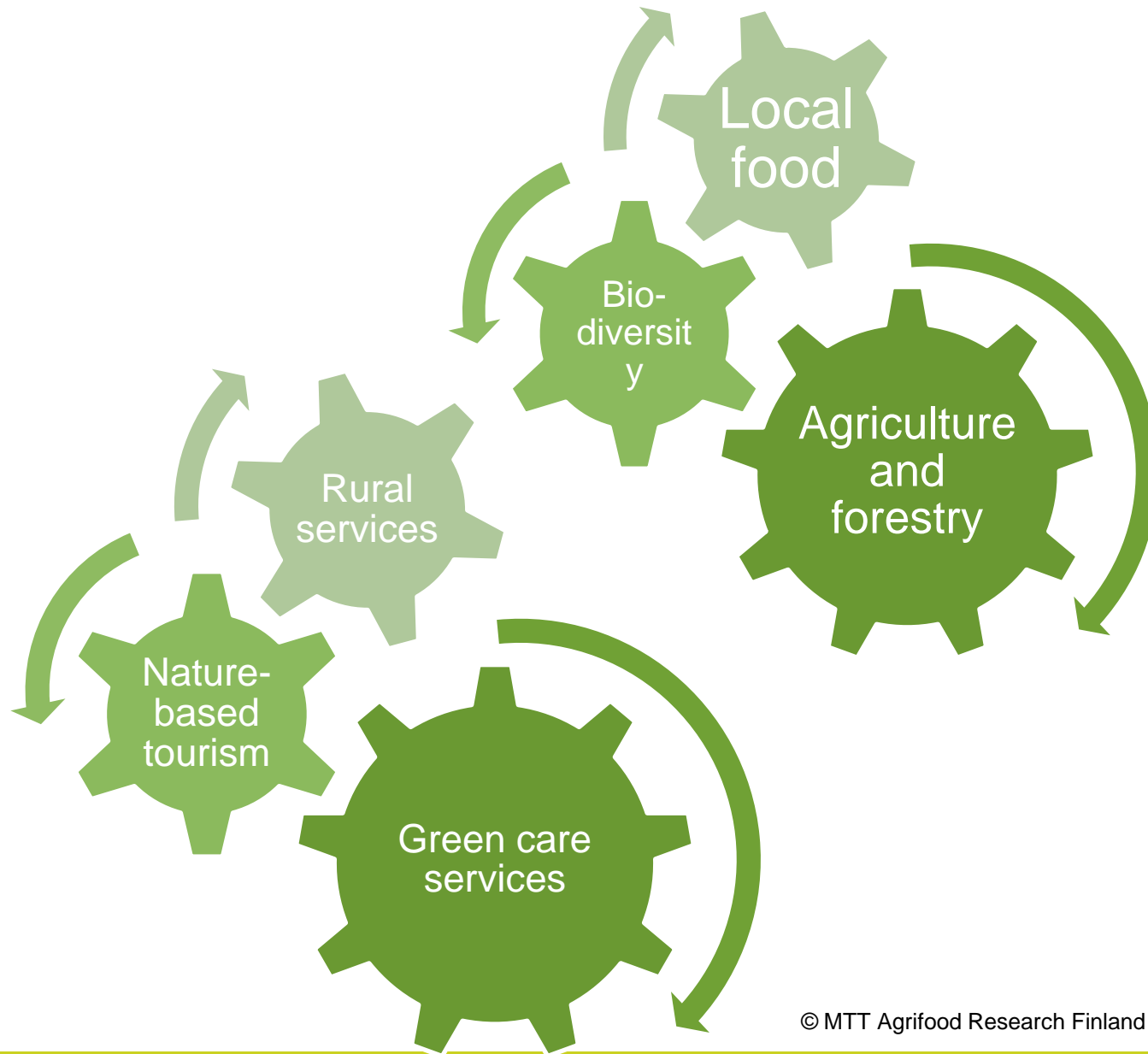
- Constructing a framework for assessing the effects of Green Care
- Funded by Rural Policy Committee/YTR
- Three focuses:
 - Human well-being
 - Society (rural development)
 - Economy
- Methods:
 - Expert workshops,
 - Literature review
 - case studies

Green Care – effects on rural development

- **Livelihoods, entrepreneurship and work**
 - *Diversification, new livelihoods,*
- **Know-how (expertise)**
 - *Use of existing knowledge, transformation of knowledge, generating new knowledge and expertise*
- **Living and services**
 - *Number of services, quality of services, maintenance of local services*

Green Care – effects on rural development

- **Accessibility, connections and infrastructure**
 - *Maintaining and developing infrastructure*
- **Attractivity and qualities**
 - *Landscape **management**, conservation of farm animal genetic resources, maintenance of rural cultural heritage*
- **Sense of community, social capital, participation and local environment**
 - *Increase in sense of community, social inclusion and local networking*



Research needs

- Cost-benefit analysis of Green care
 - Wellbeing
 - Local and regional economy
- Policy analysis
 - Frameworks, structures and implementation at various scales
- Best practices
 - At regional, national and Nordic level

A young girl with blonde hair, wearing a pink shirt, is smiling and holding a white lamb. The background is a grey, textured rock surface. The text "Thank You!" is written in white in the upper right corner.

Thank You!